





ANY CLIMATE

Operational at (-40/+50).
Full Insulated with 100mm (4")
thick rigid insulation.

BALANCED VENTILATION

Separate air inlet & outlet for each bed
for good sleep hygiene and to prevent
airborne contamination

PRIVATE BED SPACE

To maintain privacy & good sleep hygiene.
Each bed space comes equipped with USB
charging / reading light and sliding door.

KITBAG LOCKERS

Large Heavy Duty lockers for each
person along with extra small locker
for small hygiene and daily use items



**ANCHORED WIND LOAD - 225MPH
NON ANCHORED WIND LOAD 135MPH**

OPERATIONAL AT (-40/+50)



2 HIGH CONFIGURATION



STAIRKIT AND CATWALK ADD-ONS



E-TAC.20//

VENTILATION / COOLING

Fresh air intake, Cooling,
Ventilation, Electric heating
all-in-one unit



Secure Door:
Solar & Battery Power
15kW

Steel security door with
Anti-drill and anti-snap
locking system

Concealed Integrated
ladder to roof

Solar panel
hook up

FULLY INSULATED

The rigid polyurethane 100mm (4") thick foam core installed on all walls, ceiling and floor of the E-TAC provides excellent thermal insulation.

This comes from an excellent thermal conductivity coefficient, $\lambda = 0.022$, unparalleled by any mineral wool or EPS sandwich panel.

Images are indicative only , design of final product may differ - please refer to quote for full description.

© 2023 Elements Industrial Storage Ltd.
All rights reserved. No unauthorized copying or distribution without prior permission

PROJECT NUMBER -

DESCRIPTION -
E-TAC.20

DRAWN BY: SK
CHECK BY: N/A
DATE: 16/08/2023

SCALE: NOT TO SCALE



E-TAC.20.4 //

VENTILATION / COOLING

Fresh air intake, Cooling,
Ventilation, Electric heating
all-in-one unit

SLEEPING PODS

Custom steel manufactured profiles with
precise steel lin thick (25mm) steel sandwich panels
/ sliding door. CNC fabricated, consisting of:

All polyester powder coated grey (RAL 7016) to a
thickness of 85 microns (min).

Decorative Wood finish to inside with
USB Charging / Lighting.

LOCKERS

Heavy Duty Kitbag sized.

22" (W) X 38" (D) X 42" (H)

All polyester powder coated grey (RAL 7016) to
a thickness of 85 microns (min).

FULLY INSULATED

The rigid polyurethane 100mm (4") thick foam core installed on all
walls, ceiling and floor of the E-TAC provides
excellent thermal insulation.

This comes from an excellent thermal conductivity coefficient, $\lambda = 0.022$, unparalleled by any mineral wool or EPS sandwich panel.

Images are indicative only , design of
final product may differ - please refer to
quote for full description.

© 2023 Elements Industrial Storage Ltd.
All rights reserved. No unauthorized
copying or distribution without prior
permission

PROJECT NUMBER -

DESCRIPTION -
E-TAC.20.4

DRAWN BY: SK
CHECK BY: N/A
DATE: 16/08/2023

SCALE: NOT TO SCALE



E-TAC.20.4.WC //

VENTILATION / COOLING

Fresh air intake, Cooling,
Ventilation, Electric heating
all-in-one unit

SLEEPING PODS

Custom steel manufactured profiles with
precise steel 1in thick (25mm) steel sandwich panels
/ sliding door. CNC fabricated, consisting of:

All polyester powder coated grey (RAL 7016) to a
thickness of 85 microns (min).

Decorative Wood finish to inside with
USB Charging / Lighting.

TOILET

All polyester powder coated grey (RAL 7016) to
a thickness of 85 microns (min).

FULLY INSULATED

The rigid polyurethane 100mm (4") thick foam core installed on all
walls, ceiling and floor of the E-TAC provides
excellent thermal insulation.

This comes from an excellent thermal conductivity coefficient, $\lambda = 0.022$, unparalleled by any mineral wool or EPS sandwich panel.

Images are indicative only , design of
final product may differ - please refer to
quote for full description.

© 2023 Elements Industrial Storage Ltd.
All rights reserved. No unauthorized
copying or distribution without prior
permission

PROJECT NUMBER -

DESCRIPTION -
E-TAC.20.4.WC

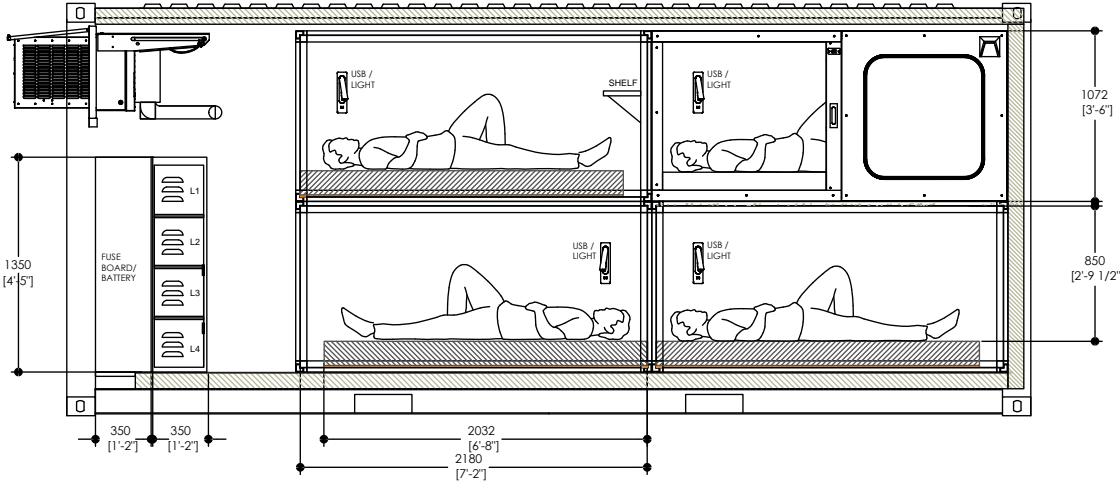
DRAWN BY: SK
CHECK BY: N/A
DATE: 16/08/2023

SCALE: NOT TO SCALE

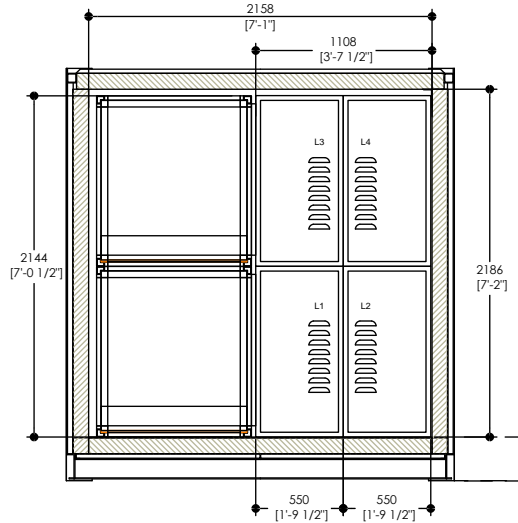


E-TAC.20.4 //

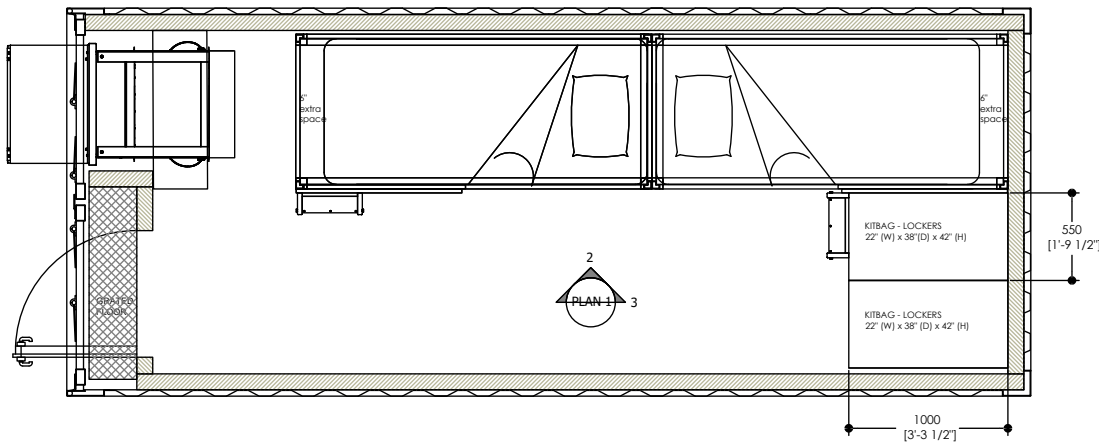
2 Side View
ETAC - 4PAX



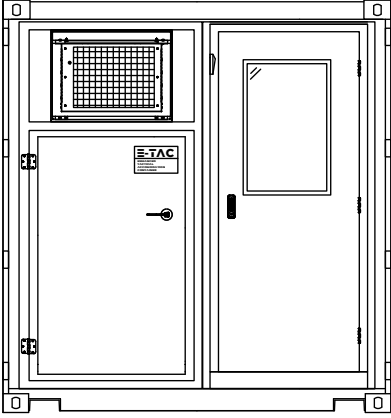
3 End View
ETAC - 4PAX



1 Plan View
ETAC - 4PAX



Exterior Elevation
Cargo Doors Removed



Images are indicative only , design of final product may differ - please refer to quote for full description.

© 2023 Elements Industrial Storage Ltd. All rights reserved. No unauthorized copying or distribution without prior permission

PROJECT NUMBER -

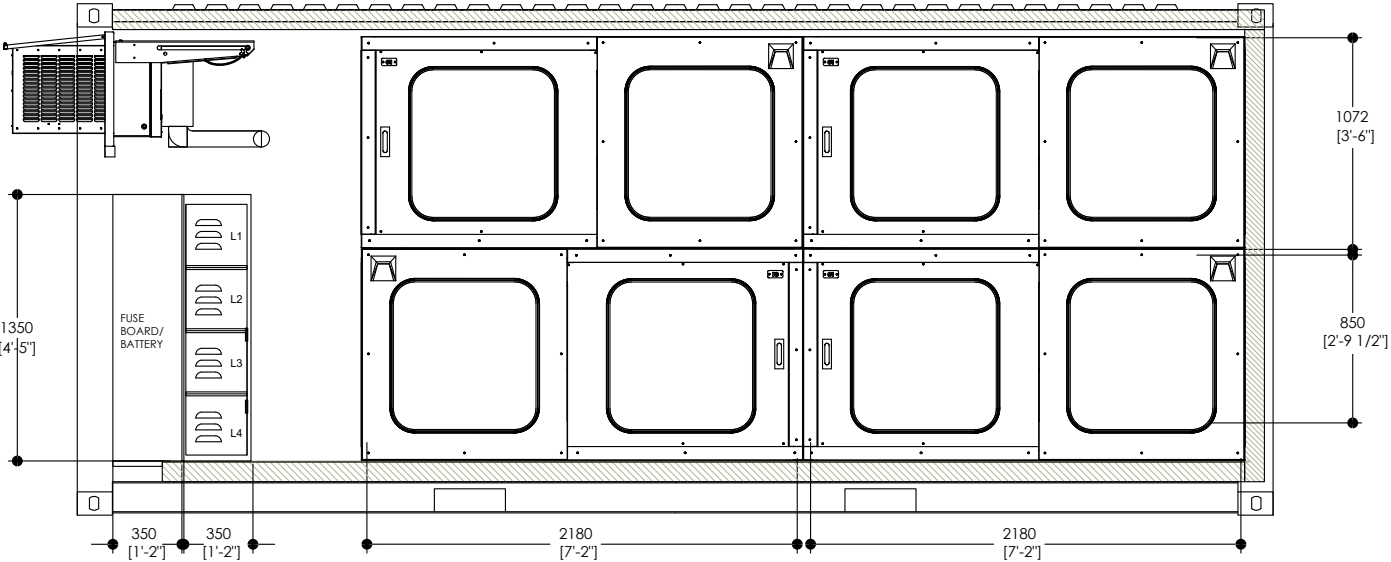
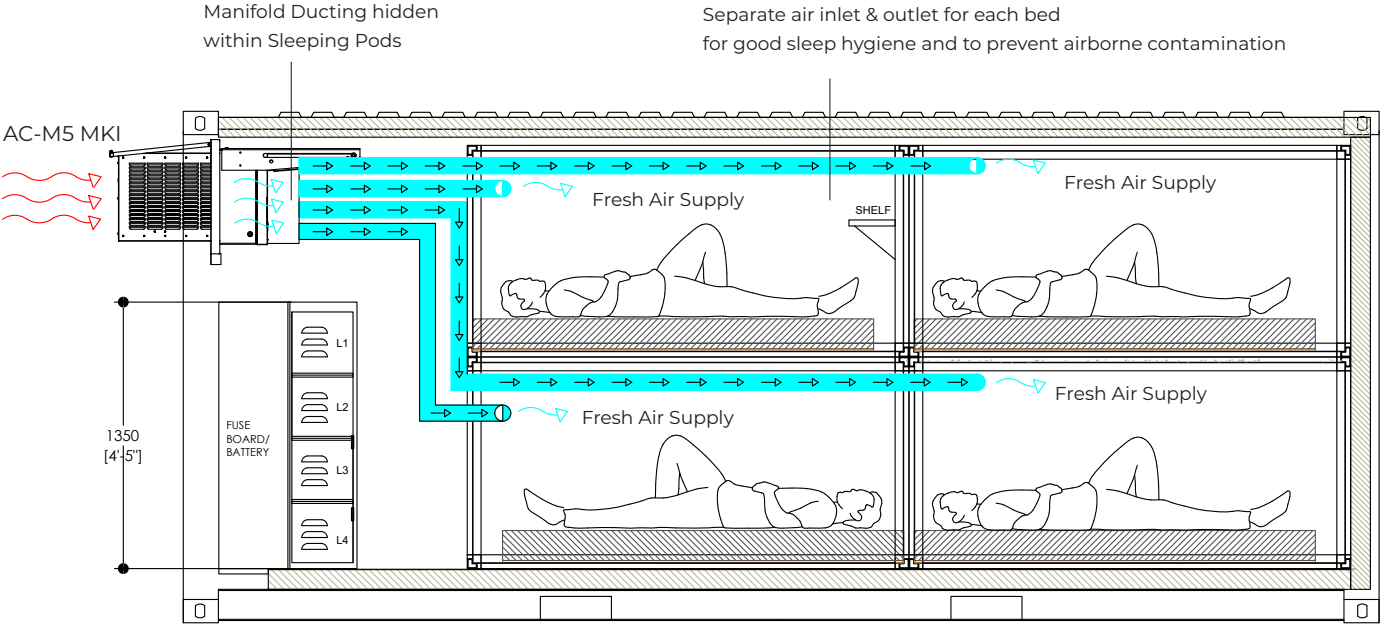
DESCRIPTION -
E-TAC.20.4
150 Unit Proposal
600 PAX Camp

DRAWN BY: SK
CHECK BY: N/A
DATE: 16/08/2023

SCALE: NOT TO SCALE



E-TAC.20.4 //



Images are indicative only , design of final product may differ - please refer to quote for full description.

© 2023 Elements Industrial Storage Ltd. All rights reserved. No unauthorized copying or distribution without prior permission

PROJECT NUMBER -

DESCRIPTION -
E-TAC.20.4
150 Unit Proposal
600 PAX Camp

DRAWN BY: SK
CHECK BY: N/A
DATE: 16/08/2023

SCALE: NOT TO SCALE



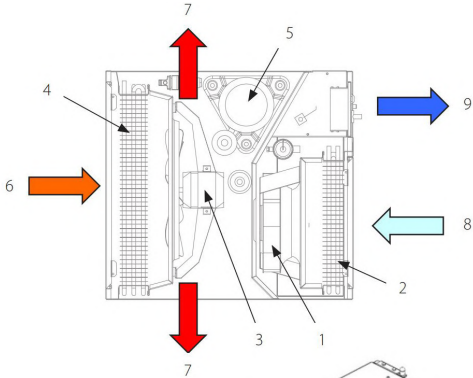
E-TAC.20.4 //

The AC-M5 MKI is designed for window mounting in the E-TAC. Together with the trap door system the air conditioner is mounted inside the container. It is designed to store within the confinement of the ISO corners of the container during transportation or storage. The AC-M5 MKI is sliding in its trap door system and is deployed from the E-TAC for operation.

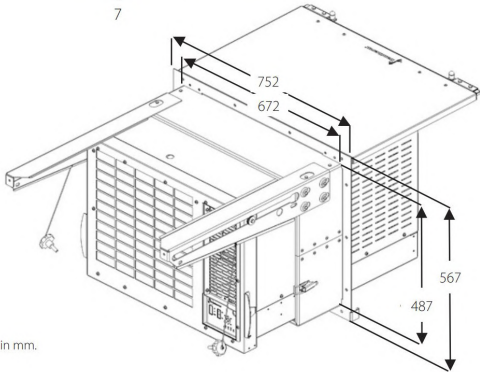
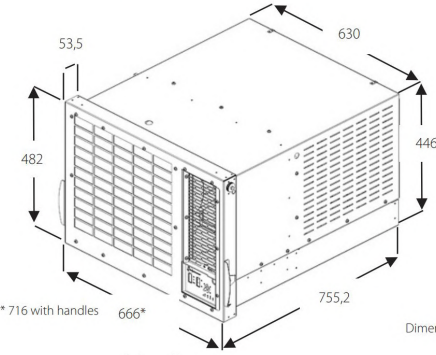


Unit components and airflow

- 1. Internal fan
- 2. Evaporator core
- 3. External fan
- 4. Condenser core
- 5. Compressor
- 6. External air intake
- 7. External air discharge
- 8. Internal warm air intake
- 9. Internal cooled air discharge



DIMENSIONS



Dimensions in mm.

Product specifications (US)

Specifications	Units	AC-M5 MKI (50 Hz)
Registered NSN number		Yes
Operating temperature range, cooling	°F	68 to 140
Operating temperature range, heating	°F	-26 to 68
Air flow	SCFM	530
Sound level, fan-speed 1 & 2 @ 1m	dB(A)	52/59
Protection class	NEMA	3S
Refrigerant	Type	R134a
Nominal cooling capacity	BTU	16.030
Heating capacity (optional)	BTU	6.825
Power supply	V/Hz	230/1ph/50
Max. running current, cooling/heating	A	9.8/9.3
Locked rotor amperage (LRA)	A	47
Max. power consumption cooling/heating	W	2,300
Hose connection	"Ø	N/A
Product size (h x l x w)	"	19 x 29.7 x 26.2
Weight	lbs	174

Images are indicative only , design of final product may differ - please refer to quote for full description.

© 2023 Elements Industrial Storage Ltd. All rights reserved. No unauthorized copying or distribution without prior permission

PROJECT NUMBER -

DESCRIPTION -
E-TAC.20.4
150 Unit Proposal
600 PAX Camp

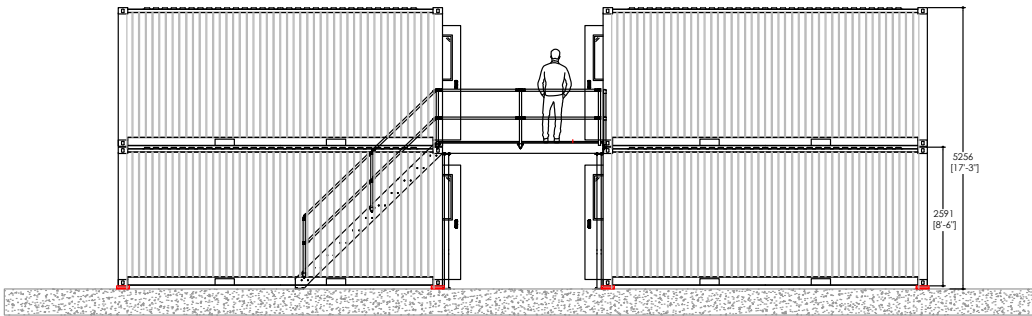
DRAWN BY: SK
CHECK BY: N/A
DATE: 16/08/2023

SCALE: NOT TO SCALE

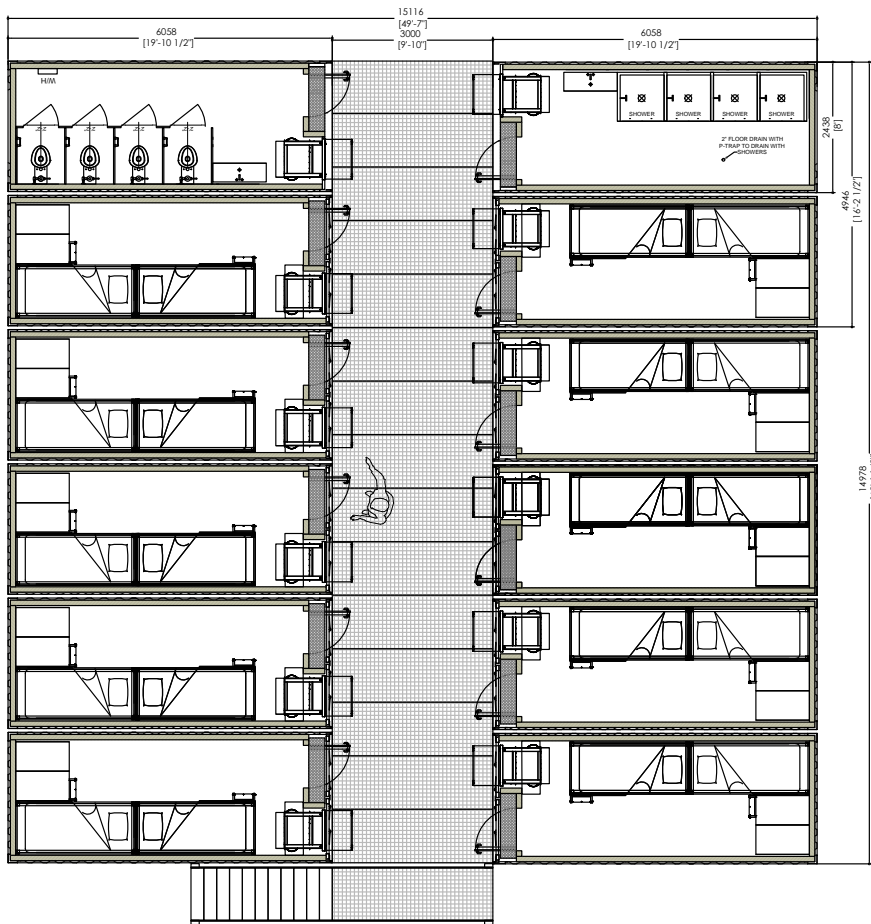


E-TAC.20.4 // 20 ETAC BLOCK

2 End Elevation
20 ETAC BLOCK



1 Floor Plan
20 ETAC BLOCK



x20 E-TAC.20.4 BLOCK
x80 PAX (4 PAX PER ETAC)

x2 TOILET ETAC CONTAINERS
(Each with x4 individual M/F toilets)

x2 SHOWER ETAC CONTAINERS
(Each with x4 individual M/F showers)

1:10 Toilet Ratio
1:10 Shower Ratio

GROUND LEVEL

Description-

x10 E-TAC.20.4 CONTAINERS
x1 TOILET ETAC
x1 SHOWER ETAC

FIRST FLOOR LEVEL

Description-

x10 E-TAC.20.4 CONTAINERS
1 TOILET ETAC
1 SHOWER ETAC

Images are indicative only , design of final product may differ - please refer to quote for full description.

© 2023 Elements Industrial Storage Ltd. All rights reserved. No unauthorized copying or distribution without prior permission

PROJECT NUMBER

DESCRIPTION -
E-TAC.20.4
150 Unit
Proposal 600
PAX Camp

DRAWN BY: SK
CHECK BY: N/A
DATE: 16/08/2023

SCALE: NOT TO SCALE



E-TAC.20.4 // 150 ETAC INDICATIVE LAYOUT

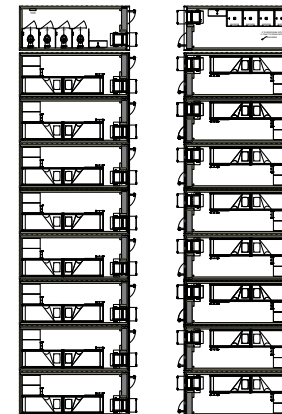
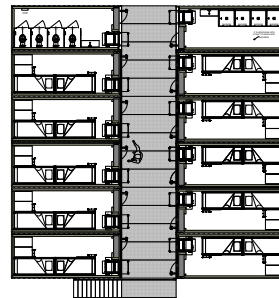
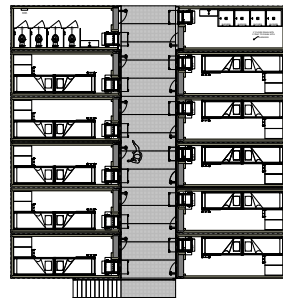
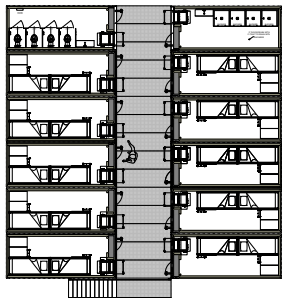
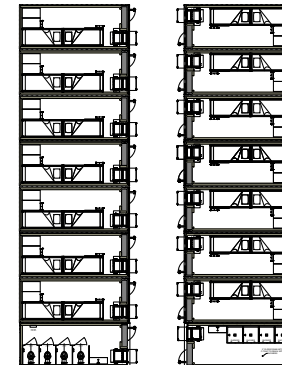
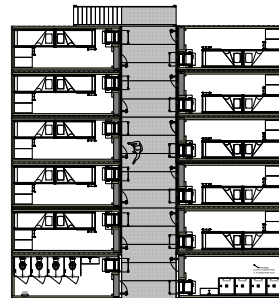
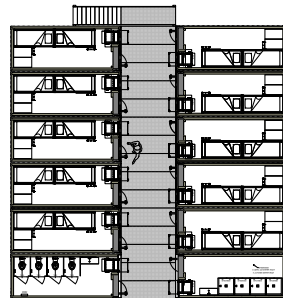
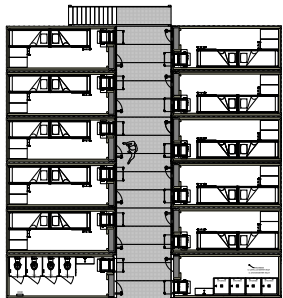
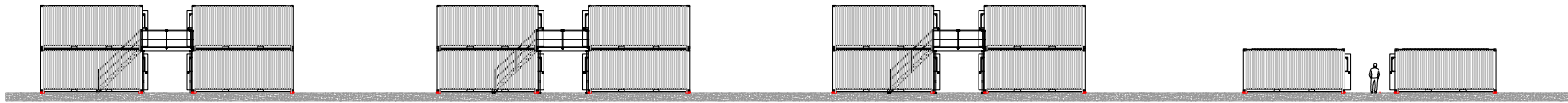
x150 E-TAC.20.4 INDICATIVE LAYOUT x600 PAX (4 PAX PER ETAC)

x14 TOILET ETAC CONTAINERS (Each with x4 individual M/F toilets)
x14 SHOWER ETAC CONTAINERS (Each with x4 individual M/F showers)

1:10 Toilet Ratio
1:10 Shower Ratio

Images are indicative only , design of final product may differ - please refer to quote for full description.

© 2023 Elements Industrial Storage Ltd.
All rights reserved. No unauthorized copying or distribution without prior permission



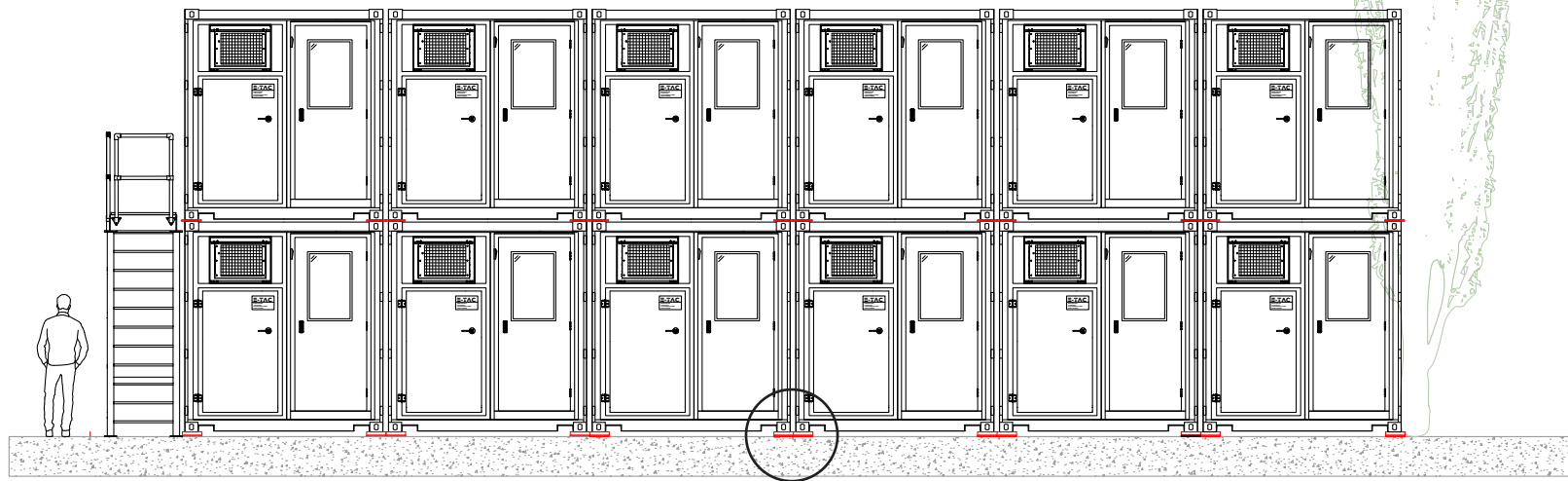
PROJECT NUMBER -

DESCRIPTION -
ETAC E-TAC.20.4
150 Unit
Proposal 600
PAX Camp

DRAWN BY: SK
CHECK BY: N/A
DATE: 16/08/2023

SCALE: NOT TO SCALE

E-TAC.20.4 // ANCHORING



Images are indicative only , design of final product may differ - please refer to quote for full description.

© 2023 Elements Industrial Storage Ltd. All rights reserved. No unauthorized copying or distribution without prior permission



ANCHORING - Twistlock Fixing Plate

Specification:

Weight – 12.5 KG

Galvanised Finish

Features:

The four-hole in the base plate for ground anchors 2.5cm diameter.

The Twistlock fixing plate is used for anchoring The ETAC ISO Shipping containers to the ground or floor.

The Twistlock mechanism enables quick installation and removal of the container from the fixing points. This is welded on to a 16mm fixing plate with four 2.5cm holes designed for bolts.

PROJECT NUMBER -

DESCRIPTION ->
Ø /
150 Unit Proposal
600 PAX Camp

DRAWN BY: SK
CHECK BY: N/A
DATE: 16/08/2023

SCALE: NOT TO SCALE

E-TAC

ENHANCED
TACTICAL
ACCOMMODATION
CONTAINER